

# Ottawa's Winter Cycling Network – Happy 3<sup>rd</sup> Birthday!

CITE Conference June 2018



**Whitfield, P.Eng, MCIP, RPP**  
or Engineer/Planner  
Planning + Design, Inc - Canada

# Happy 3<sup>rd</sup> Birthday!

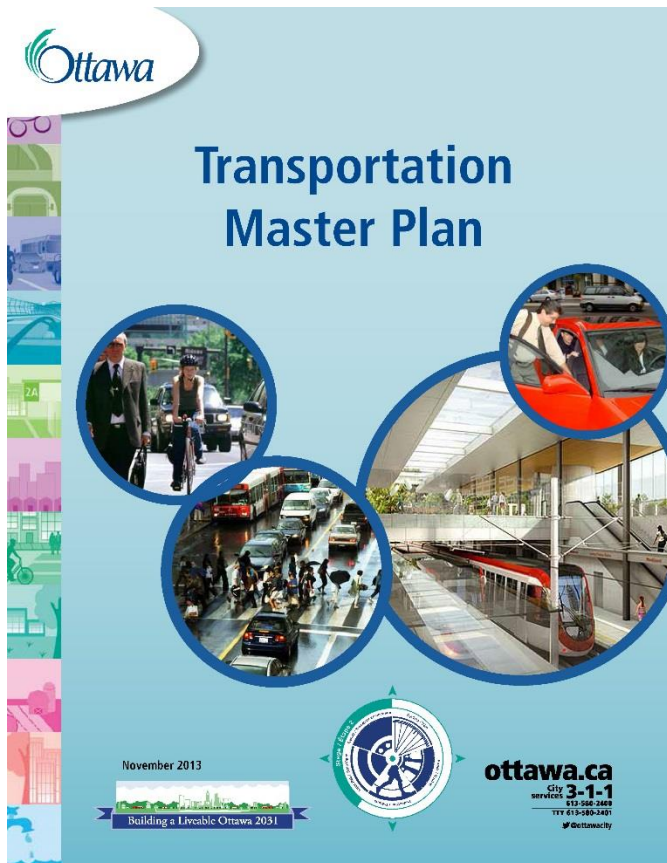
Initiated in 2015-2016 season...

- Approximately 40 km of winter-maintained cycling network
- Focussed within a 5 km of Ottawa's core area



Photo Credit: Ottawa Bike Lanes

# Ottawa Transportation Master Plan (2013)



## Section 5: **Develop A Great Cycling City**

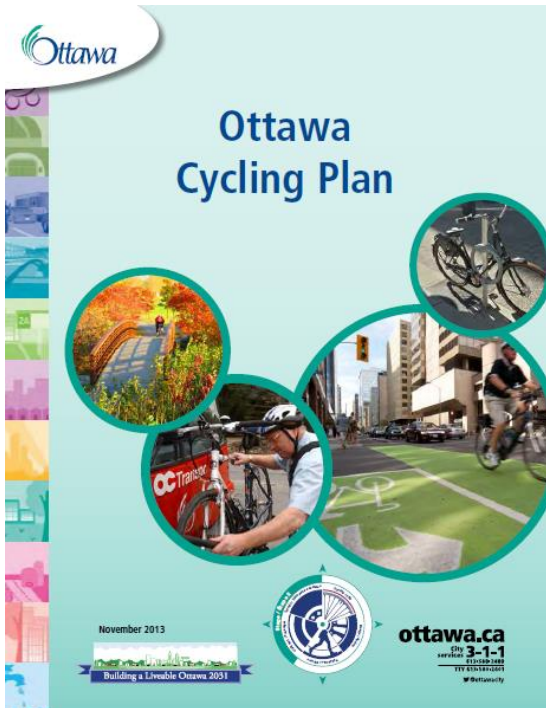
### Action 5-5: **Maintain a basic winter cycling network**

#### **Testing and expansion**

The winter cycling network is to be implemented and then reviewed during the next *Ottawa Cycling Plan* update. It may **ultimately** be expanded.



# Ottawa Cycling Plan (2013)



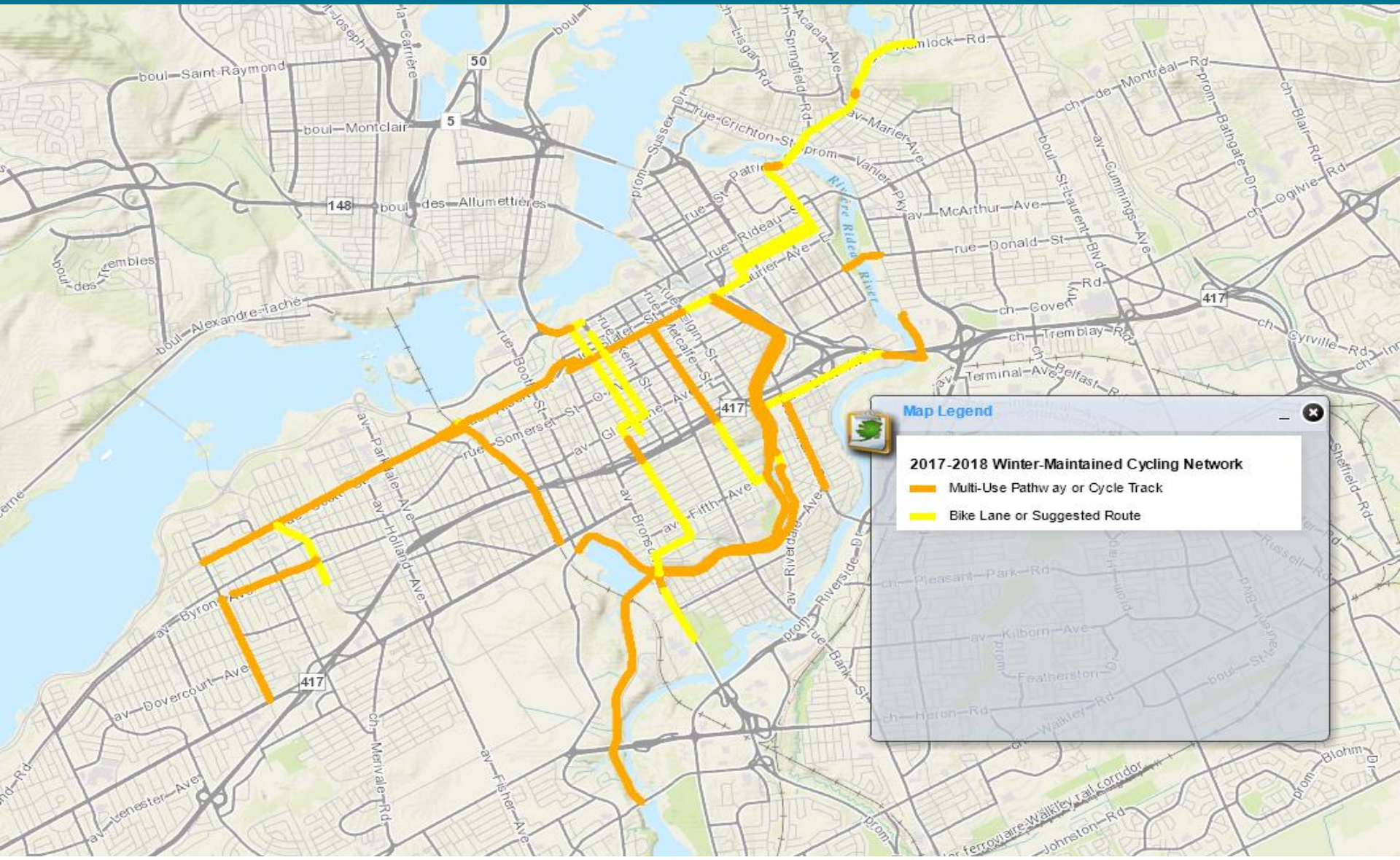
## Recommendation 5.6:

- Make Winter Cycling Network a term-of-council priority.
- Ask Public Works to identify the winter clearing standards.

OCP 2013 lays out functional design of the Winter Cycling Network and set the stage for...

### Strategic Initiative (passed in 2014)

- Maintain the winter cycling network
- Total \$800,000 budget over four years (2015-2018)





# On-Street Bike Lane Clearing

- plowed following **2.5 to 5.0 cm** of accumulation
- maintained to **bare pavement** within 24 hours following the completion of snow accumulation
- snow removal will be scheduled when snow banks are **encroaching on to 50%** of the width of the cycle lane



Photo Credit:  
Matthew  
Wesley-James

# Raised Cycle Track Clearing

- plowed following **2.5 to 5.0 cm** of snow accumulation
- adjacent to arterial roadways - maintained to a **bare pavement**
- otherwise - maintained to a **snow packed standard**
- snow removal scheduled when snow banks are **encroaching on to 50%** of the existing width



Photo Credit: Ottawa Bike Lanes



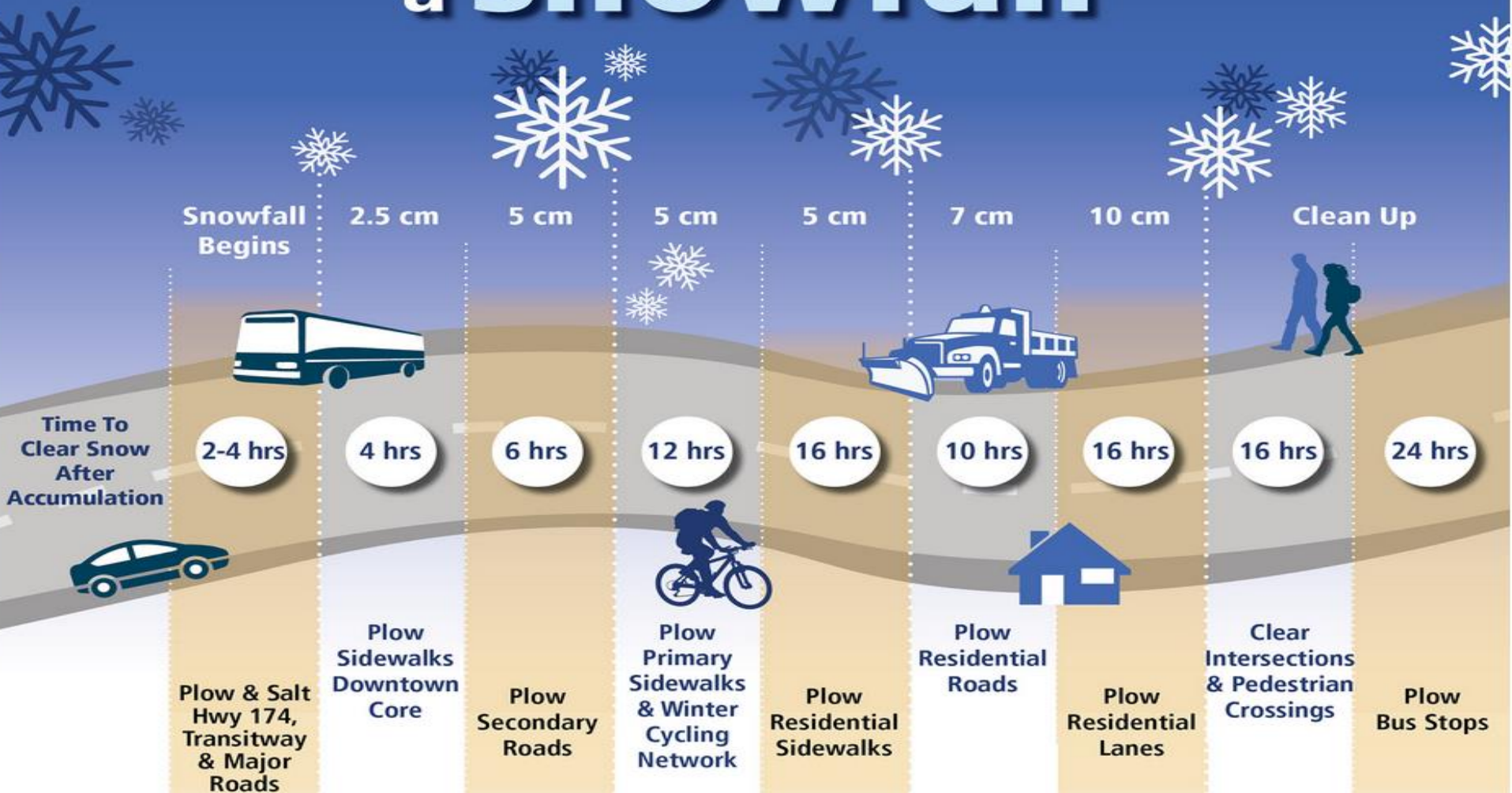
# Multi-Use Pathway Clearing

- plowed following **2.5 to 5.0 cm** of snow accumulation
- routes to transit and school - maintained to **bare pavement**
- otherwise - maintained to **snow packed standard**



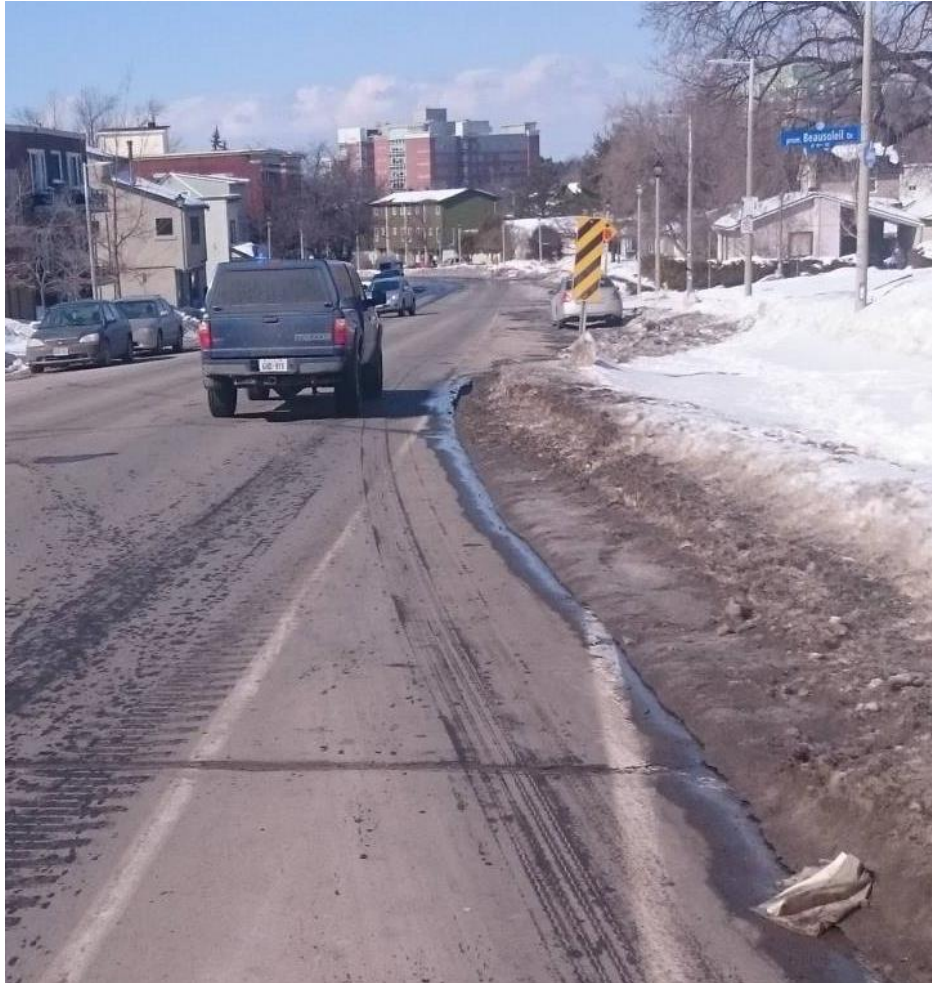


# What to expect during a snowfall



Guidelines only. Subject to change in extreme conditions.

# Winter Bikeway Design - Observations





# Winter Bikeway Design - Observations



# Winter Bikeway Design - Observations





# Winter Bikeway- Missing Links



# Winter Cycling Culture Shift



Alex



U have to be a real knob to ride a bike on a day like this.

11:01 AM - Dec 22, 2017



**Ottawa Police** ✓

@OttawaPolice



Bicycles have every right to be on the road all year round. For many, it's their only mode of transportation. Give them room. If you don't have room to give them at least 1 metre of distance, wait until you do before you go around them.

12:46 PM - Dec 22, 2017

♥ 4,513 💬 1,105 people are talking about this





# Winter Bikeway Design

In order to facilitate snow clearing:

- Delineators/object markers not installed directly on the paved roadway but raised on curbs
- Minimum width of 1.8 m for cycling facilities constructed as part of ride-over bulb-outs



Photo Credit: Matthew Wesley-James

# Winter Bikeway Design

## Ride-over bulb-outs:

- Community desire to maintain bulb-out as traffic calming measure
- Bulb-out rebuilt to allow “ride-over” as part of cycling facility network
- Challenging to winter maintain



Ride-over



Traditional Bike Lane



# Winter Bikeway Design



Planter Protection:



# Winter Bikeway Design

- Multi-Use pathways in Ottawa are typically not lit
- Lighting provided as this pathway provides important connection to transit
- Snow clearing of the O-Train Pathway





# Operation Concerns

- Variety in Bikeway Configuration
  - No single piece of equipment is perfect
  - Snow extraction for transport is more difficult
- Slow Build of the Winter Priority Network
  - Work is Absorbed by Existing Staff
  - Requires coding of work time to measure cost
- Scheduling the “Beats” becomes more Difficult

# OC Transpo & Winter Cycling

- Year-round bike parking at most Transitway Stations & some bike shelters. Bike racks on buses are removed from November to April
- Winter-maintenance of many pathways that provide access from adjacent streets
- Bikes allowed on-board the O-Train Line trains year-round



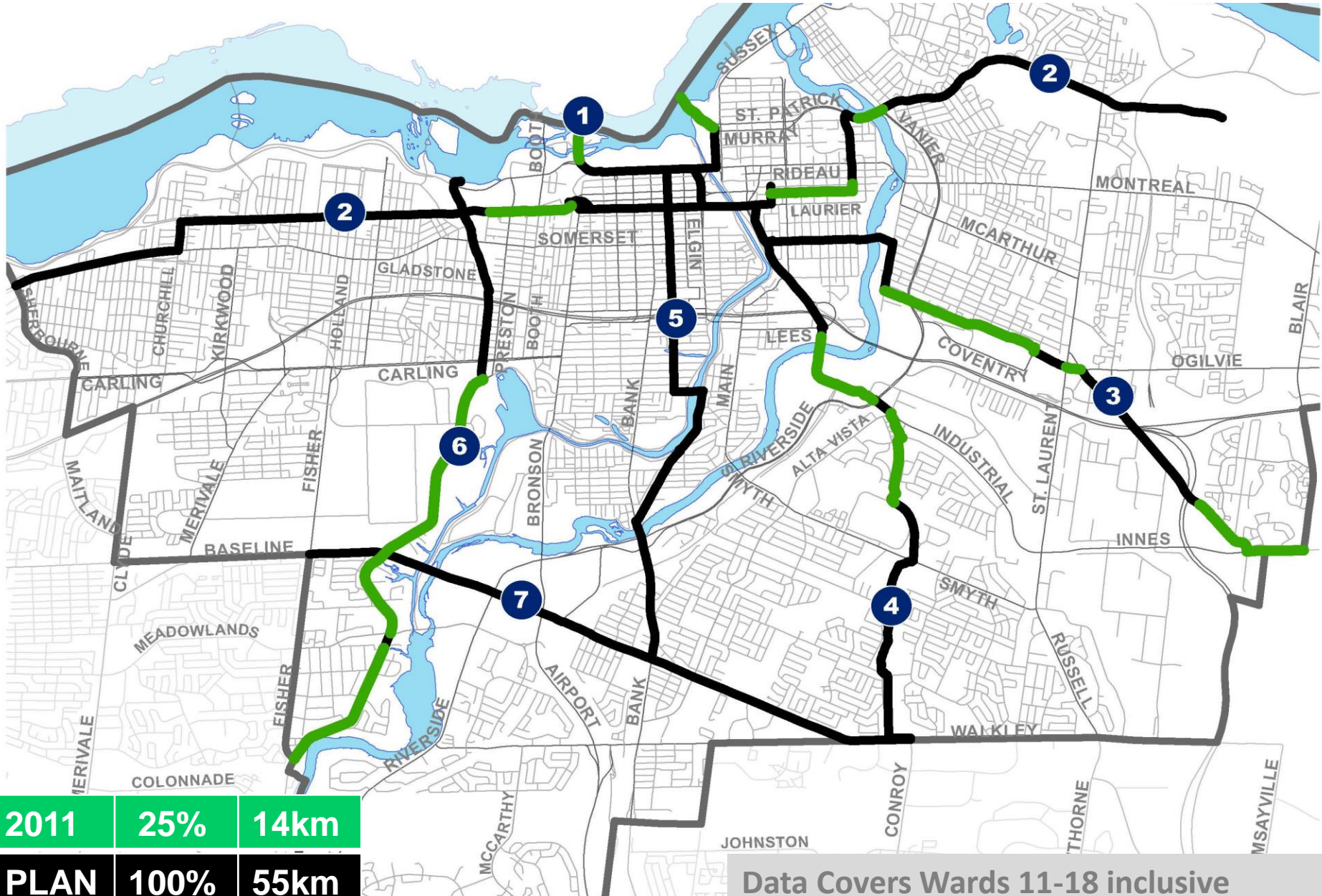


# Ottawa's Cycling Future

**“All City infrastructure projects will strive to deliver the highest practical level of comfort for cyclists, with the lowest Level of Traffic Stress.”**

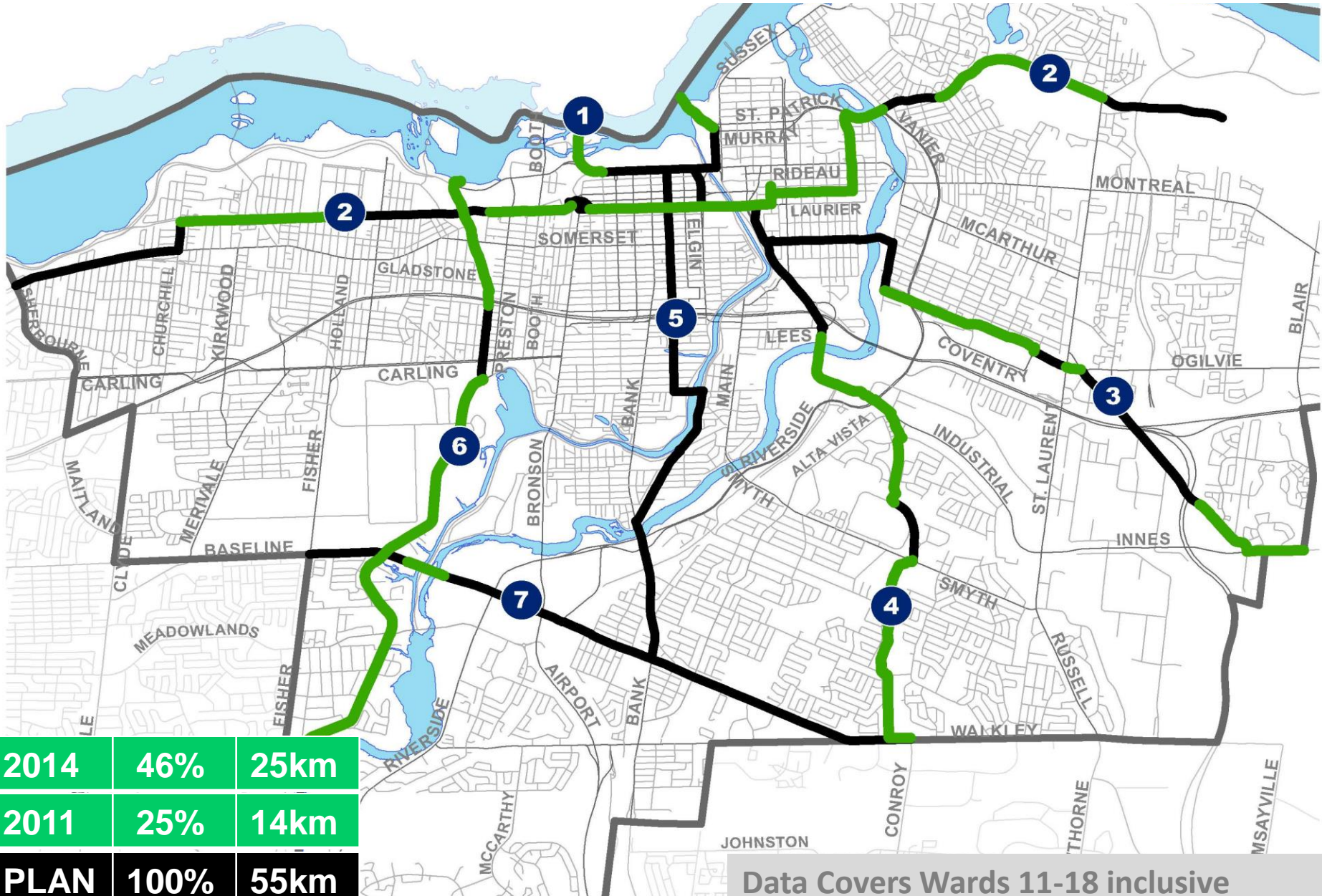


# Cross-Town Bikeway Network Implementation

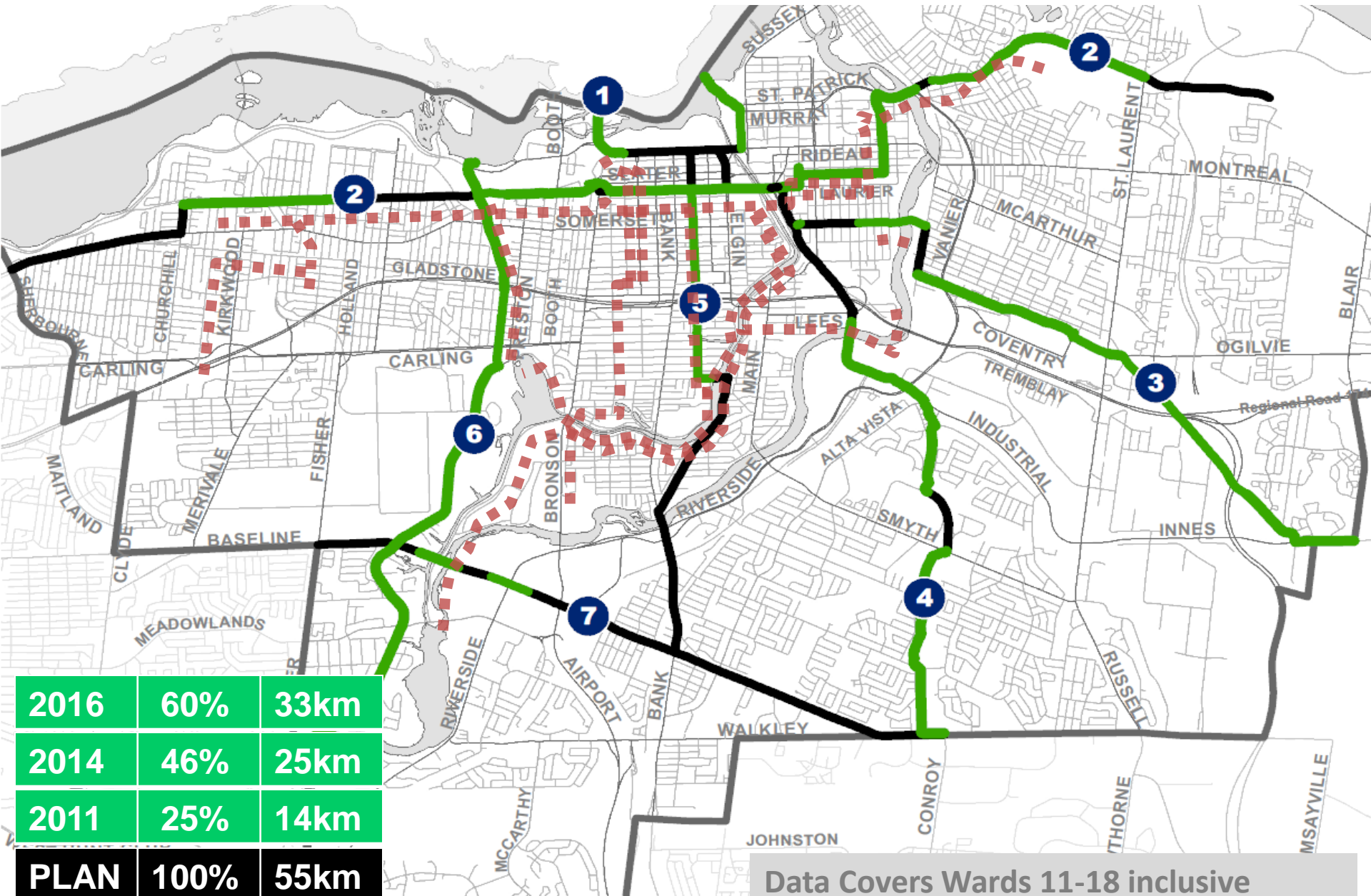




# Cross-Town Bikeway Network Implementation



# Cross-Town Bikeway Network Implementation





# Newer Winter Cycling Infrastructure



Adawe Crossing



Main Street Raised Cycle Track



Hickory Street Bridge



O'Connor Bikeway



photo: HansonTheDike.com and @PhysioKaren

# Questions?

**[katewhitfield@altaplanning.com](mailto:katewhitfield@altaplanning.com)**